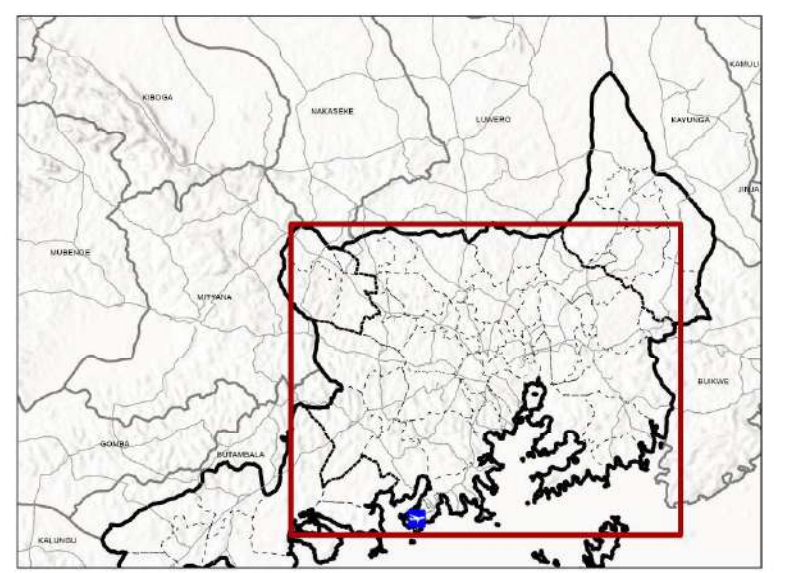


PLAN MAP 3

GKUGA General Land Use Plan (2024-2050)



Legend

- Local Councils
- Entebbe Airport
- Rivers

Railway Network

- Existing Railway Line
- Proposed New Railway Line

Road Network

- Existing Expressways
- New Expressways
- National Road
- District Roads
- Other Roads

Protected Areas

- Ramsar Sites
- Environmental

Landuse Category

- CBD
- Commercial
- Civic
- Residential
- Institutional
- Mixed Use (Commercial and Industrial)
- Mixed Use (Residential and Commercial)
- Historic, Traditional and Cultural Zones
- Industrial
- New Residential Areas
- Commercial Agriculture
- Protected Water Front Zone
- Infrastructure and Utilities
- Open Space
- Agriculture
- Open Water

Project:

The Project for **I**ntegrated **U**rban **D**evelopment **M**aster **P**lan for **K**ampala **S**pecial **P**lanning **A**rea (GKMA-IUDMP)

Japan International Cooperation Agency (JICA)
 Oriental Consultants Global Co., Ltd
 Yachiyo Engineering Co., Ltd.
 PACET Corporation
 PASCO Corporation

Authority:

Ministry of Kampala Capital City and Metropolitan Affairs

Drawing No:

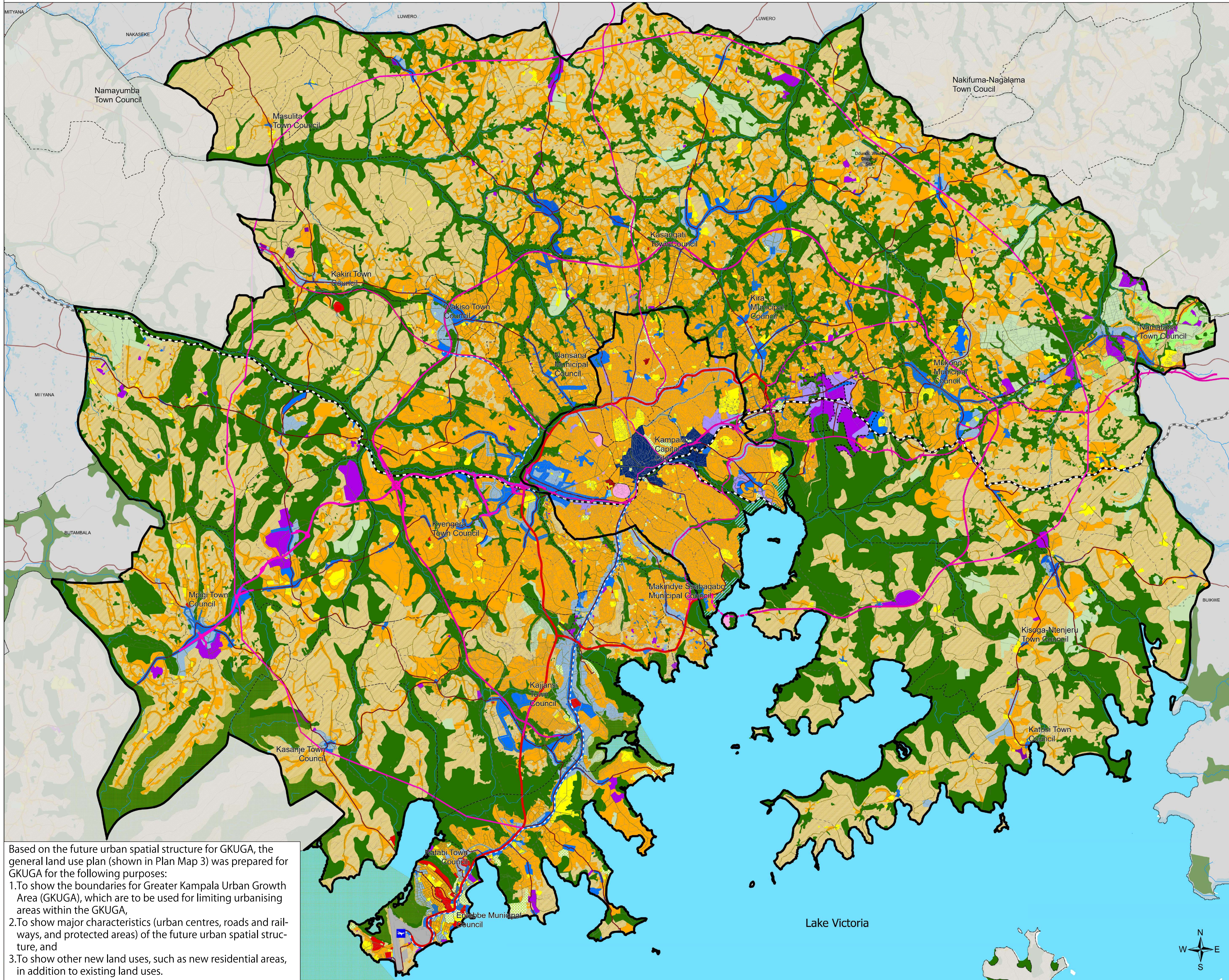
GKMA/GoU-MKCCMA/04/2024/002/3

Date: May, 2024

Scale: 1:80,000



This Scale is at A0 Paper Size



Based on the future urban spatial structure for GKUGA, the general land use plan (shown in Plan Map 3) was prepared for GKUGA for the following purposes:

- To show the boundaries for Greater Kampala Urban Growth Area (GKUGA), which are to be used for limiting urbanising areas within the GKUGA,
- To show major characteristics (urban centres, roads and railways, and protected areas) of the future urban spatial structure, and
- To show other new land uses, such as new residential areas, in addition to existing land uses.

